

THE TRAVEL CLUB

Drive Yourself Getaways

Connecticut River Valley and Goodspeed Musicals

3 Days: Wednesday, September 18-Friday, September 20, 2019

Includes tickets to **BILLY ELLIOT THE MUSICAL**

ENJOY A DELIGHTFUL NEW ENGLAND GETAWAY in the Connecticut River Valley. You set the pace on these drive-yourself getaways while we provide the first-class amenities, including admission to the Hill-Stead Museum in Farmington. Highlighted by Wednesday evening tickets at one of America's world-class musical theatres—The Goodspeed Opera House in East Haddam—our getaways include a two-night stay at the Inn at Middletown, just 30 minutes away. Located on Main Street, the historic National Guard Armory has been transformed into an elegant 100-room inn situated at the entrance of renowned Wesleyan University. Enjoy an at-your-leisure visit to Hill-Stead Museum—a Colonial Revival house and art museum set on a large estate known for its French Impressionist masterpieces, architecture, and stately grounds and gardens.

Includes

- Two nights' first-class accommodations: Inn at Middletown
- Continental breakfast Thursday & Friday
- Wednesday evening ticket to *Billy Elliot The Musical*
- Admission to Hill-Stead Museum (at your leisure)
- Parking at hotel

Accommodations

THE INN AT MIDDLETOWN

70 Main Street Middletown, CT 06457

Tel: 860 346-2288

The Inn at Middleton is centrally located in a historic former National Guard Armory in the heart of Middletown. Rooms mix country style furnishings with modern amenities, and all have views of the Connecticut River.

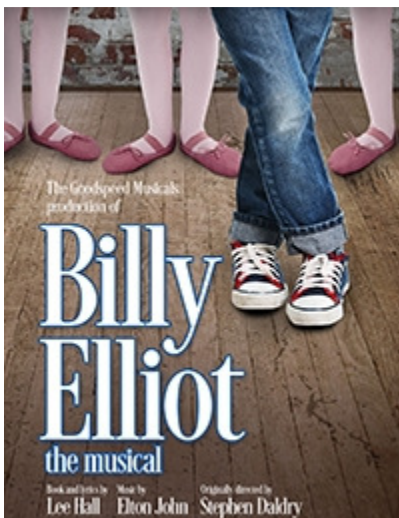
Rates

\$309 per person double occupancy

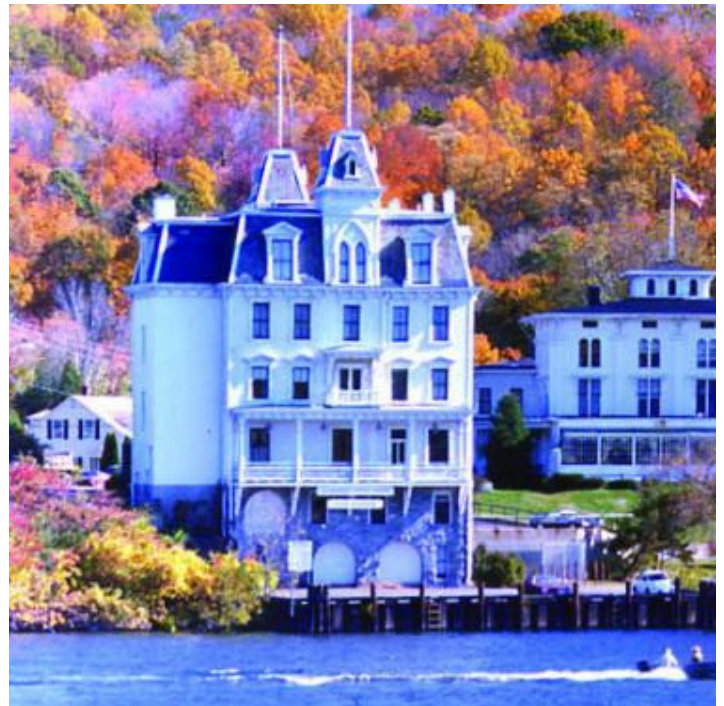
\$249 per person triple occupancy

\$499 for single reservations.

Per person deposit is \$150.



Billy Elliot The Musical



Young Billy Elliot is pulled between his family's coal-mining roots and his newly discovered passion to dance. Is his future boxing gloves or ballet shoes? In the hardscrabble world of a changing England, reaching high becomes a leap of faith. Following your dream — and overcoming obstacles — has never been more electric than in the 10-time Tony winning Broadway phenomenon with songs by the legendary Elton John. Celebrate the idea of being yourself in the Goodspeed premiere of this powerful dance-filled story! Billy Elliot the Musical is a tour-de-force of dance with a contemporary story that is based on a heartwarming British movie. Book and Lyrics by Lee Hall; music by Elton John.

DAILY ITINERARY

**September 18: 3 pm Check-in at the Inn at Middletown
8pm: performance BILLY ELLIOT THE MUSICAL**

**September 19: Continental breakfast at the Inn
Visit Hill-Stead Museum at your leisure, Thursday or Friday**

**September 20: Continental breakfast at the Inn
11 am: Hotel check-out**



Inn at Middletown



Hill Stead Museum

SHOPPING

[Downtown Essex](#) - Three distinctive villages—Essex, Centerbrook, and Ivoryton—offer some of the finest examples of early colonial and federal architecture, now home to a unique blend of private residences, antique shops, specialty boutiques, inns, restaurants, marinas and attractions.

[Village of Chester](#) - It's winding and crooked Main Street, about one city block in length, is lined with antique and vernacular 19th century buildings that house the town's wide array of art galleries, elegant shops, boutiques, and award-winning restaurants.

[Goodspeed's Station Country Store](#) - located just across the Swing Bridge, this charming gift shop offers an array of unique gifts and home decor. Candles, nostalgic candy, handcrafted jewelry, specialty foods, and holiday must-haves!

[Westbrook Tanger Factory Outlets](#) - a first-class destination for shoppers seeking their favorite designer and name brands, offering merchandise that is on trend and in season direct from the manufacturer at value prices

[Clinton Crossing Premium Outlets](#) - Upscale, fashion conscious shoppers who prefer designer labels can expect the largest collection of designer brands, unique outdoor settings, and savings of 25 to 65 percent every day.

HISTORICAL SITES

[Gillette Castle State Park](#), East Haddam, CT

It looks like a medieval fortress, but a step inside the stone castle reveals the built-in couches, table trackway, and woodcarvings that all point to the creative genius that was William Gillette.

[Essex Steam Train and Riverboat](#), Essex, CT

The Essex Steam Train and Riverboat ride is a fun-filled trip for adults and children of all ages! Two coal-fired locomotives are available to pull our collection of lovingly restored railroad cars. You'll be swept away by the hiss of steam, the blast of the whistle, and the clickety-clack of the tracks - an authentic journey back to the days of steam.

[Connecticut River Museum](#), Essex, CT

Where the River comes to life. Located on the waterfront in historic Essex, the Connecticut River Museum is the perfect place to explore the heritage and experience the wonders of New England's Great River.

LOCAL ATTRACTIONS

[Chester-Hadlyme Ferry](#)

A charming and quaint way to travel across the Connecticut River! In operation since 1769, the ferry accommodates 8 to 9 cars and 40 passengers. Operates April through November. Weather conditions and river levels can affect operations; please visit the CT Dept of Transportation [site](#) for current schedule.

[Lady Katharine Cruises](#), Haddam, CT

Discover the endless possibilities for putting a splash of fun in your life. Whether you're thinking of a special occasion or going out just for fun, you'll make it a better experience when you are on the water. Welcome aboard Lady Katharine Cruises, the ultimate Connecticut River experience!

[RiverQuest](#), Haddam, CT

Come early for your day in the country and enjoy a scenic boat ride on the Connecticut River! Better yet, bring your lunch and beverages to enjoy during the cruise. Learn about local history, birdlife, and wildlife on the river; see beautiful homes and yachts, and even Gillette's Castle while cruising on the friendly RiverQuest. Show your Goodspeed ticket for a \$5 discount or use code "Goodspeed" when booking online.

[Mohegan Sun](#) - A world at play and a world to its own, Mohegan Sun is one of the world's most amazing destinations with some of New England's finest dining, hotel accommodations, retail shopping, live entertainment and sporting events. Boasting three world-class casinos, Mohegan Sun is also host to the Kids Quest/Cyber Quest family entertainment facility, a luxurious day spa, convention center and meeting facility, a state-of-the-art Poker Room as well as three major entertainment venues with seating from 300 to 10,000. People from across the globe come to see live concerts with some of today's top headliners, along with major sporting events including Mohegan Sun's very own WNBA team, the Connecticut Sun.

[Foxwoods Resort Casino](#) - one of the premier hotel, gaming, shopping and entertainment destinations in the Northeast. As the largest resort casino in North America, Foxwoods offers a vast array of gaming in six casinos; AAA Four-Diamond hotels, restaurants from gourmet to express, world-renowned spas, awarding-winning golf, state-of-the-art theaters, and exclusive retailers.

[Priam Vineyards](#), Colchester, CT

Priam Vineyards was founded in 1998 in the historic town of Colchester, CT by Gloria Priam and her husband Gary Crump, with plans to continue a family tradition that was started in Budapest, Hungary in the late 1800's by Andrew Priam, Gloria's grandfather. In 2002, Priam Vineyards became a licensed farm winery, and opened the winery in April of 2003. Priam Vineyards is open every Friday, Saturday, Sunday and select holidays, 11 a.m. to 6 p.m., March through December, for tastings and self guided tours of the vineyard.

[Stahly Farm Winery](#), East Haddam, CT

Production began in the summer of 2014 with three varieties of Apple Wine. Fruit wine, unlike grape wine, has a shorter fermentation period due to the lower sugar content of the fruits used. Their first wine is expected to be available for sale in September of 2014. The farm stand also features a wide range of farm goods, grown in Connecticut, all according to the season - Christmas trees, annuals, perennials, vegetables and pumpkins.

[Sundial Gardens](#), Higganum, CT

Herbalist, lecturer, and garden designer Ragna Tischler-Goddard has labored for three decades to create this oasis. A shop in the 18th-century barn stocks teas from around the world, tea accoutrements, melt-in-your-mouth Belgian chocolate, and other specialty foods. Ask about the wildly popular afternoon tea tastings and themed talks on tea and gardening. Outside, enjoy a trio of romantic 17th- and 18th-century-style gardens, where the air is perfumed with culinary, medicinal, and decorative herbs. The Persian-style knot garden and shady century-old grape arbor invite quiet reflection.

PLEASE NOTE: *This pre-departure itinerary is designed to give you an idea of how this itinerary is structured. We reserve the right to make any changes to your final itinerary if deemed necessary, at any time prior to departure.*

PLEASE NOTE: *This is not your final itinerary. You will receive final documents (itinerary, tickets (if applicable), etc.) approximately 2-3 weeks prior to departure. Although we try our best to ensure that information is accurate at the time of publication, we are not responsible for any error, omission, misprint or liability that results from the use (or misuse) of this information.*